



BAYVIEW SCHOOL NEWSLETTER

www.bayview.school.nz 09 444 2222 office@bayview.school.nz

Greetings, Kia ora, Hola, Talofa lava, Namaste, Bula Vinaka, Ola, Bonjour, Kumustá, Goeie dag, Chào, Asalam aleykum, Konnichi wa, Annyong, Malo e lelei, Guten Tag, Salut, Fakaalofa atu, Sok sabai jite, Grüezil

Dear Bayview Families,

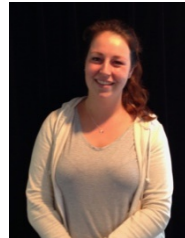
A huge thank you to the parents who organised our first Great Bayview Garage Sale held on Saturday 4th March. We raised just over \$2300 from this event that will go towards supporting our senior camp in 2 weeks time. Thank you also to the parents and community members who donated goods for this event. One person's cast offs is another person's treasure!

It was lovely to have so much support from parents to help on the stalls and lovely to have some community members whose children have left Bayview many years ago! What a great community we have.

You may have noticed also that the Fale area has been tidied up. This was initiated by the Baptist Church group who gave up their Sunday to clean this area up. They were supported by lots of locals who came along and pitched in.

It is the people who volunteer their time and energy that really make Bayview a special place. Thank you to all the community minded people who give freely of their time. You make a difference.

WELCOME to Anne Arnoldussen from the Netherlands



This term we welcomed Anne to Bayview School as she is working with us for 5 months. Anne is from the Netherlands and is currently studying child development at university. Anne will be working

alongside our staff to support student learning. Anne is based in Habitat 13 with Mrs Terry but will also work in other classes during her time with us. Although English is a second language for Anne she has excellent communication skills. Anne is staying with a Bayview family and is hoping to spend some time visiting beautiful parts of New Zealand during her time here. If you see Anne I am sure you will say hi and make her feel welcome (and if you can speak Dutch she would be very impressed).

SCHOOL JACKETS

It is that time of year when we offer the opportunity to purchase a school jacket for your child. Enclosed with this newsletter is an order form. We have some samples in the office that you can check sizing with before you place your order. Jackets are \$80 for children's sizes and \$85 for adults. Ordering closes at 9am on Thursday 13th April (last day of term) and the jackets should be delivered at the beginning of term 2. Please note these are NOT compulsory.

COMMUNITY DISCO

Tomorrow night we have our first community disco. This is open to all children who live in the Bayview area. We have broken this into 2 age levels with the junior disco being from 5pm – 6pm and the more senior disco from 6pm – 7.30pm. The junior disco is for toddlers and younger students who perhaps are not as active and who may feel overwhelmed by older children, whilst the senior disco is for those students who like being active and who are not worried about being around year 6, 7, 8 kids. We are leaving it up to parents to decide which disco their children attend.

We have organised lots of stalls kids can visit to add a different dimension to the disco. These include:

- Face painting \$1
- Nail painting \$1
- Hair colouring (not permanent) \$1
- Temporary tattoos \$1
- Cupcakes \$2
- BBQ sausages \$2
- Glow in the dark items 50c-\$5
- Lollies \$1
- Drinks \$1.50
- Chips \$1
- Chocolate bars \$2.50

Door charge for kids is \$5 and this includes a glow band. Door charge for parents is \$2 and includes a raffle ticket to win a hamper.

Thank you to PJ for donating the hamper! What a great support PJ is to Bayview School. Tickets can be purchased at the door or on Ezilunch online.

Please note children need to be picked up by an adult as it is not safe to have them walk home alone. We also have some parents acting as security on the night as we want this to be a happy and friendly event. We also have the Community Constable calling in to support.

We hope to see lots of new faces from the wider Bayview community.

VISITORS FROM JAPAN

On Friday 17th March we are hosting some educators from Japan through Sunshine books. We will be holding a powhiri for them from 9.10am and all parents are welcome to join us for this. As tangata whenua parents will be able to sit on the chairs to the left hand side of the hall for this. As this is a formal occasion we request that parents please turn their mobiles to silent and keep their toddlers under control.

Issue: 03/17

Newsletter Date:
9th March 2017

KAIPATIKI COMMUNITY OF LEARNING

Bayview School is a member of the Kaipatiki Community of Learning. The other schools involved in this CoL are:

Glenfield College
Glenfield Intermediate School
Target Rd Primary
Glenfield Primary
Marlborough Primary
Manuka Primary
Windy Ridge Primary
Wairau Valley Special School
Bayview Kindergarten
Glenfield Kindergarten
Marlborough Kindergarten
Mark Whitford, principal of Glenfield Intermediate School is the executive principal of this group and has responsibility in reporting back to the Ministry of Education and the Minister of Education around progress. The focus for our CoL is Visible Learning which Bayview is a lead school in as we have been a visible learning school for 2 years now. This has been so successful for Bayview that the other schools wanted to know more about it and have made it the centre of what we do in the Kaipatiki area!

Dates for diaries

Bayview Community Disco	10/3
Visiting Japanese teachers	17/3
Class Photos	21/3
Parent helpers for camp mtg 6pm	22/3
Dental Van onsite	27/3
Y5/6 CAMP	28-31/3
BOT mtg 6pm	6/4
Parent feedback meetings	10-13/4
Hat day parade/SPCA fundraiser	13/4
Last day T1 2pm	13/4

CITIZENSHIP

ATTITUDE

RESPONSIBILITY

EMPATHY

RELATIONSHIPS

RESOURCEFULNESS

RESILIENCE

REFLECTIVENESS

Welcome to our new pupils:



Diaz Rudolph, Lachlan Watkins,
Vanshika Maharaj,
Franklin Liang, Jack Rang, Hayden James

We know you will all enjoy your time at Bayview School!

Habitat Photographs

This year our Habitat photos will be taken in Term 1, on the 21st March 2017. Please make sure to wear the correct full school uniform

Assemblies

We hold our school assemblies every Friday from 9 a.m., and you are welcome to come and celebrate our successes and enjoy items put on by learning groups. The timetable is:

10 th March	Harakeke
17 th March	Kauanuanu
24 th March	Pikorua
31 st March	No Assembly

Classrooms are in the following Professional Learning Groups:
Pikorua Habitats 2/3,4/5,16,10
Kauanuanu Habitats 6,13,14,15
Harakeke Habitats 17,1,12,8

GKR Karate Fitness with purpose

- Learn Self Defence
- Develop Self Discipline
- Increase Focus & Concentration
- Build Strength Coordination & Fitness
- Generate Positive Self Esteem & Confidence

Bayview Primary School Hall
Wednesday 6 - 7.00pm (All grades)
7 - 8.00pm (6th kyu+)
\$12 per session, Pay as you go No lock in contacts
\$95 Registration Promotional Offer for a 4 month trail.
For more information contact:
Hayden 021753115
hgwynne@gkrkarate.com

Bayview Community Disco Tomorrow

Friday the 10th March 2017 in the Bayview Hall

Parents on entry \$2 include a raffle ticket to win a hamper

Juniors/Toddlers 5pm-6pm, entry \$5 includes glow band

Seniors/Intermediate 6pm-7.30pm, entry includes glow band.

We will have a lot of different booths, including cupcakes, nail painting, face painting and more!!
Tickets are available at the door or you can pay online (ezlunch).

Shore to Shore 5Km Fun Run/Walk

Sunday 9th April 2017

Register with our school

Fun run/walk \$10

Timed run/walk \$15

Register Online Now

Go to shoretoshore.co.nz to enter

Bus Information

Buses will be departing from the finish line area at Milford for the Shore to Shore startline at Takapuna Grammar
Price :\$3 each way/per person
Buy your bus tickets online when registering

Time: Pre event buses 7am-8am

Post event buses 11am-12pm

(Buses will not operate out of these times)

REGISTRATION COLLECTION

If you are affiliated with a school you will be asked during your online registration which classroom of your chosen school you would like your registration(s) delivered to. You can only choose one classroom, so all your registrations will be delivered to the same classroom for collection. If you are not affiliated with a school (general public), you will need to pick up your race number and timing chip from the Harbour Sport Offices on the dates provided below.

Community News

NORTH SHORE TRAMPOLINE CLUB *Great Sport * Great Fun * Great Friends* We have after school recreational or competitive classes available and a Saturday Drop in Session.

We are also offering \$30.00 off our birthday parties until the end of February.

Check out our website or give our friendly staff a call.

www.northshoretrampoline.co.nz Phone 478 4411

To All Parents – The Mobile Dental Van will be visiting our school this term to examine children who are due to be seen. The clinic contact for our school is Glenfield Community Dental Clinic on 444 6160

Year 2 & Year 3/4 Miniball & Year 5/6 Basketball

We are currently needing a least another 4 year 2 children to form a year 2 Miniball team. Fee are \$90 if your little one is interested.

Summer Sports

All Years Kidzplay Winter Netball League

Are you interested in playing Netball for our school.

The 2017 Winter league will run from 13th May to 1st July (excluding 3 June – Queens bday) and from 29 July to 9 September (14weeks)

Games are on Saturdays at Pinehurst School in Albany from 8.45am until mid-afternoon

The fees this year will be \$70.00 per player which includes uniform hire. Payment must be received before your child can be registered in a team.

Please visit www.ezlunch.co.nz using your account to make your payment of \$70.00.

Payment must be received by March 31st before your child can be registered in a team. Any inquires please see Shannon in the office
We require 8 players per team.

